

INSTRUCTIONS

Mini Teardrop with Suction Cup



Includes:
Sectional Pole
Heavy Duty Suction Cup



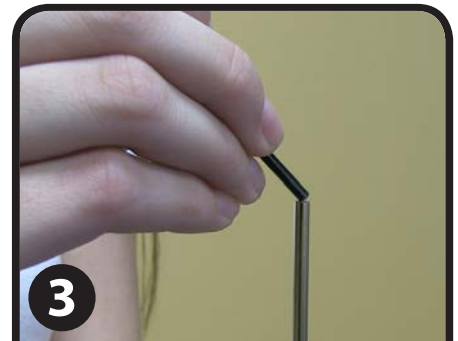
1

Turn the knob on the suction cup base counter-clockwise to loosen it. Remove the knob and the screw.



2

Take the sectional pole piece with the cylinder base and attach it to the suction cup base. Run the screw through the base of the pole piece and tighten the knob to secure it in place.



3

Connect the sectional pole pieces together.



4

Slide the banner onto the pole via the pole sleeve.

Note: Be sure to feed the hardware all the way through the sleeve, to the tip of the banner.



5

Attach the loop at the bottom of the banner to the knob on the suction cup base to secure the banner in place.



6

Push the lever on the suction cup base down to mount the banner to a smooth surface.

Note: Push the center button to release the banner.